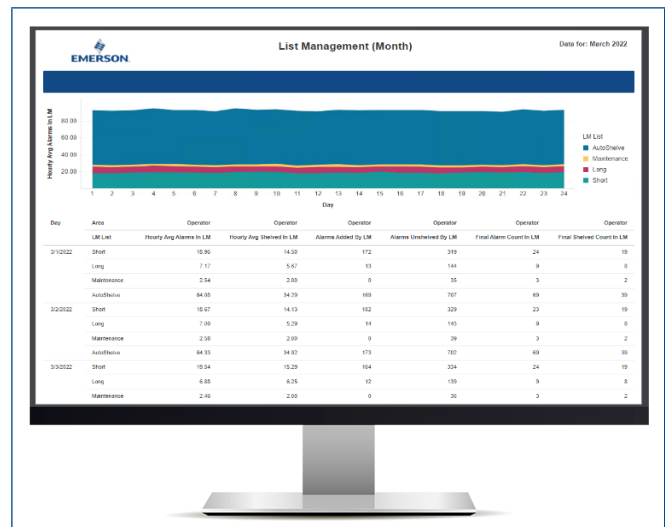


DeltaV™ AgileOps Alarm Shelving

- Advanced alarm shelving
- Automatic or operator-based shelving
- Configurable shelving lists based on user role and type of shelving
- Limit shelving of specific alarms with exclusion lists
- Automatic report generation of shelving metrics in AgileOps Performance Analytics
- Compliant with API RP1167, IEC 62682 and ISA 18.2 standards
- Compatible with multiple control system platforms



AgileOps™ Average Alarm Report.

Introduction

Manage malfunctioning alarms, stale alarms or broken instrumentation DeltaV™ AgileOps Alarm Shelving. With advanced alarm shelving capabilities, AgileOps can reduce nuisance alarms, auto re-enable alarms, and minimize the number of alarms on the summary at your facility. Engineered shelving techniques, such as auto-shelving, allow for management of alarms that are not easily incorporated into dynamic alarm suppression techniques. AgileOps Alarm Shelving works hand in hand with AgileOps Dynamics to help your site comply with applicable standards.

AgileOps is compliant with ISA 18.2, EEMUA 191, IEC 62682, API RP1167, 49CFR192.631 and 49CFR195.446 standards.

Benefits

Advanced Auto-Shelving – Engineered shelving for dynamic management of those alarms that are not easily manageable with classic state-based alarm management methods.

Advanced Timer Technology – Allows for configuration of bypass reminders, standby pumps, etc. without needing to reconfigure and reload objects in the control system.

Built-in Contention Management – with AgileOps Dynamics and Enforcement Reports. This allows users to choose which application has write priority over others when a common control system parameter is written to.

Security Controlled – Access to shelving or configuring alarms on lists as well as the ability to prevent suppression of specific alarms (such as safety showers or H2S monitors) via exclusion lists.

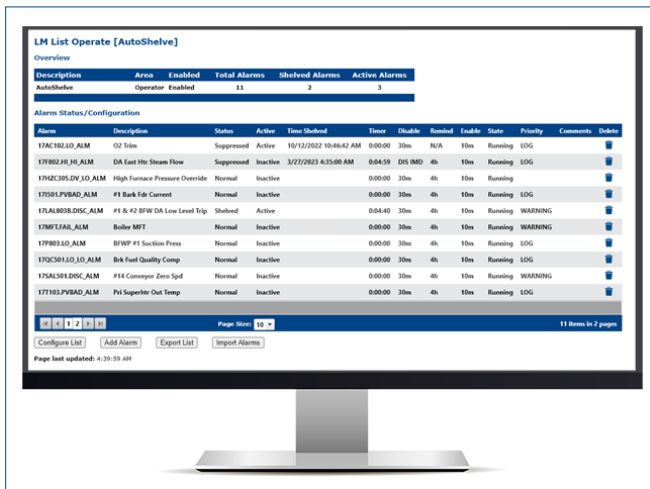
Control System Agnostic – Easy to use and standardized integration into the operator interface on the control system for advanced alarm shelving ensures a consistent use of tools even with different control systems.

Concurrently Monitor Software on Multiple Control Systems – In addition to DeltaV, AgileOps is compatible with many control systems including Ovation™, OpenEnterprise™, Honeywell Experion® and TDC®, Siemens PCS7® and APACS, ABB 800xA, ABB Advant, DOW's MOD 5, Schneider Foxboro®, TIS/OMM, ClearSCADA/GeoSCADA, and Yokogawa Centum VP, thus delivering a complete solution for an entire site with one or multiple control system manufacturers. AgileOps also offers a generic connector for other systems not listed.

Product Description

AgileOps Alarm Shelving includes advanced shelving capabilities beyond those offered in the standard control system. These advanced capabilities include multiple lists for maintenance as well as nuisance alarms. Using this feature, alarms that are active due to malfunctioning instrumentation or equipment can be managed by different work processes than short-term nuisance alarms. This allows Operations Supervision to approve alarm shelving that requires work orders for Maintenance and spans multiple shifts, while also allowing board Operators to address alarms within a shift. Reporting of KPIs can be based on the cause of the shelved alarm.

Individual alarms on a point, module or tag can be shelved, so a user can shelve the PVLO alarm but leave the PVHI alarm enabled. The technology which removes alarms from the shelf has additional capabilities such as enable timers. The alarm active status can be set to re-enable after a set period or if the alarm is inactive for a set period. It can also be based on the classic “egg timer” seen on many control systems where the alarm is shelved for a fixed time. Smart dropdowns and dialogs for shelving ensures the most important information is quickly selectable by Operations or Engineering.



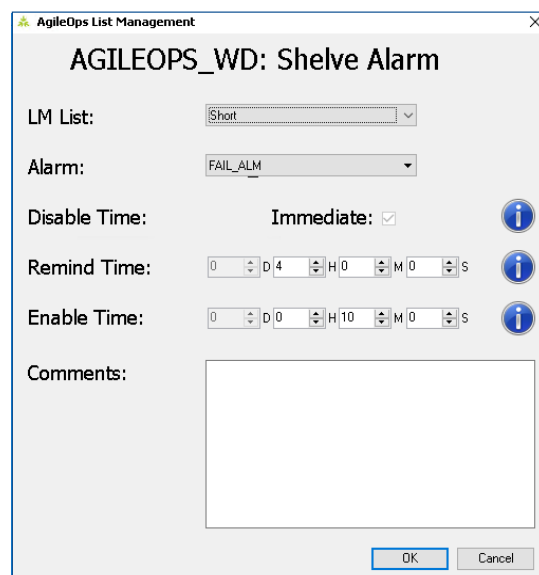
AgileOps Alarm Shelving Lists.

AgileOps not only allows Operators to shelve nuisance alarms, but also can shelve stale, standing alarms automatically. Engineers can develop auto-shelve lists to address alarms that a corrective action by the Operator does not clear. This allows for the alarm to annunciate to the Operator, then re-arm at a later date when the condition has cleared and thereby avoids becoming a stale alarm.

To assist users in identifying a simple fault detection, AgileOps provides visual cues that quickly identify any location where an abnormal situation resides. Examples include a critical or moderate issue that may need to be addressed or if a list is inactive.

AgileOps offers the ability to use exclusion lists to restrict specific groups of alarms or individual alarms from being shelved. An exclusion list can either be assigned to a single list or to multiple lists and alarms can also be assigned to more than one exclusion list if desired.

All lists in AgileOps are fully configurable including the name of the list, default timer values, and the minimum or maximum limit for timers. Timers can be configured to limit shelving to a few hours or to allow shelving for multiple years. Security access control can be defined to ensure required privileges are met in order to configure the appropriate shelving timers. The Alarm Shelving module can be used by multiple users with different control system responsibilities, and each type of user can have a different set of authorized privileges assigned.



Operator Helper for Shelving to AgileOps Lists.

Product Support

AgileOps Product Support is delivered through Guardian™. Guardian is Emerson's digital platform for addressing the end-to-end lifecycle needs of automation & control software and asset performance management solutions. The Guardian digital experience enables users to quickly connect to product support; securely manage subscriptions; get intuitive views into system health; and explore additional software and services that propel performance.

Requirements

- Hardware Requirements
 - 2.20 GHz 8 core processors
 - 64 GB Ram
 - 512 GB hard drive
- Software Requirements
 - Microsoft SQL Server 2016, 2019, or 2022 with Microsoft Server OS 2016, 2019 or 2022
- Web browser (Microsoft Edge or Chrome)
- Licensing for AgileOps Database

Ordering Information

DeltaV AgileOps is licensed on a Flexible Subscription Unit (FSU) basis. An FSU is a currency that can be used to access any AgileOps feature licensed on an FSU basis, with each feature requiring its own number of FSUs. The FSU subscription is offered in one-year, three-year, and five-year terms. To purchase, extend, or expand a license, please contact your Emerson Sales Representative.

Related Products

- DeltaV
- DeltaV AgileOps Alarm Shelving
- DeltaV AgileOps Database
- DeltaV AgileOps Dynamics
- DeltaV AgileOps Operational Limits
- DeltaV AgileOps Performance Analytics
- DeltaV AgileOps Safety Integrity

©2024, Emerson. All rights reserved.

The Emerson logo is a trademark and service mark of Emerson Electric Co. The DeltaV logo is a mark of one of the Emerson family of companies. All other marks are the property of their respective owners.

The contents of this publication are presented for informational purposes only, and while diligent efforts were made to ensure their accuracy, they are not to be construed as warranties or guarantees, express or implied, regarding the products or services described herein or their use or applicability. All sales are governed by our terms and conditions, which are available on request. We reserve the right to modify or improve the designs or specifications of our products at any time without notice.

Contact Us

🌐 www.emerson.com/contactus

