

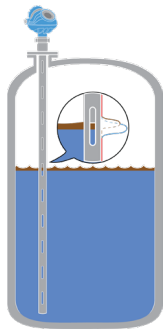
Rosemount 5300 Guided Wave Radar Level Transmitter

Product Enhancements and Large Coaxial Probe

The world's **most trusted**
Guided Wave Radar level
transmitter.
Rosemount™ 5300,
now **even better!**

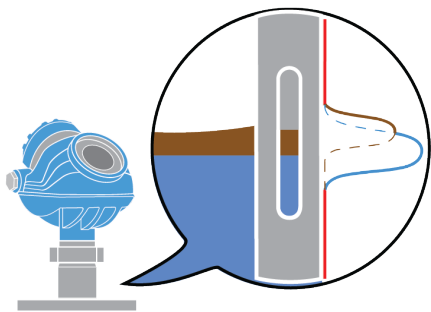


Discover the new Possibilities



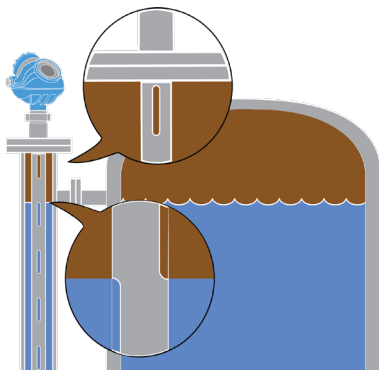
- Peak in Peak - thin layer detection
- Large coaxial probe
- Proof -testing in safety applications
- Updated DD's/DTM™'s
- Optimized factory configuration for upstream oil and gas production tanks
- Configurable alarm level - Rosemount/NAMUR

Peak in Peak - Thin Layer Detection Technology



- Detect top layers down to one inch (25 mm)
 - Utilizes a new and unique Peak in Peak algorithm to detect the top level echo peak even when inside a water peak
- Increased efficiency lowers costs by:
 - Reduced loss of oil and extra costs for disposal
 - Earlier detection of poor separation/ unwanted oil layers on top of water

Large Coaxial Probe - Utilize More



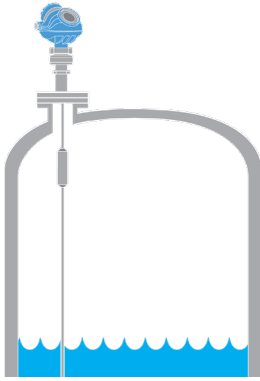
- Design optimized for no signal losses
 - Highest reliability under toughest measuring and application conditions
 - No dead zone and unaffected by internal tank structure - accurate measurement all the way to the top
- Reliable measurement during both filling and emptying
 - Handles restart with full chamber
 - Seamless slots throughout probe
- Tolerant to build-up



*Enhancements to our signal processing algorithm greatly improve tolerance for sub-optimal installations and eliminate the need for complex configuration. The result is a device that **performs flawlessly**, even when the interface becomes thinner and more ambiguous.*

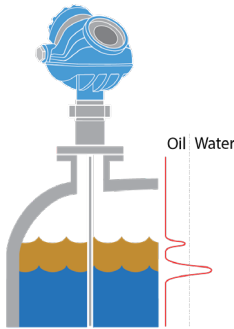
Rosemount 5300 Level Transmitter Enhancements

Proof-Testing in Safety Applications



Comprehensive 2 point remote proof-testing with 94 percent coverage. Perform at the DCS, during operation, without raising the tank level to potentially hazardous levels. Minimized risk and maximized safety in minutes.

Upstream Oil and Gas Configuration



New factory configured threshold enables more predictable behavior and true Plug and Play in upstream oil and gas production tanks. Echo below threshold considered as oil, and echo above threshold as water.

Specification

Output	Loop-powered 4-20mA HART®, Modbus®, FOUNDATION™ Fieldbus
Temperature/Pressure rating	-320 to 752 °F (-196 to 400 °C) / Full vacuum to 5000 psig (345 bar)
Configuration	DD's/DTM's compatible with major hosts, AMS Suite / Field Communicator (Emerson 475), TREX, Rosemount Radar Master™ customized PC setup and support software
Process connections	Threaded, flanged, Tri-Clamp®
Probe materials	Stainless steel or PTFE covered, Duplex 2205, Alloy C-276, Alloy 400
Diagnostics	Enhanced diagnostic capabilities
Challenging applications with Large Coaxial Probe	Level and Interface, thin oil layers on top of water, disturbing electromagnetic interference, turbulent hydrocarbons
Hazardous area approvals	ATEX, IECEx, FM, CSA, overfill protection (DIBt/TÜV WHG)
Safety Instrumented Systems	IEC 61508 certified to SIL 2

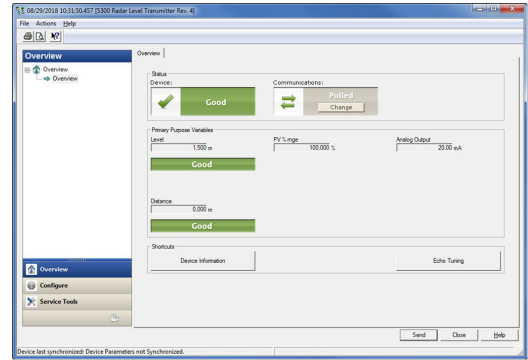
Emerson Terms and Conditions of Sale are available upon request.
The Emerson logo is a trademark and service mark of Emerson Electric Co. Rosemount is a mark of one of the Emerson family of companies.
All other marks are the property of their respective owners. © 2019 Emerson. All rights reserved.

Emerson Automation Solutions
8200 Market Boulevard
Chanhassen, MN 55317 USA
T (U.S.) 1-800-999-9307
T (International) (952) 906 8888
F (952) 906 8889

- Emerson.com
- Facebook.com/Rosemount
- LinkedIn.com/company/Emerson-Automation-Solutions
- Twitter.com/Rosemount_News

00807-0500-4530_RevAA

DD/DTM



All DD/DTM updated to the latest dashboard and .NET standard. Fully configurable by customer configuration tools, e.g. DD, DTM, Rosemount Radar Master™, Rosemount 475 and AMS Trex™ Device Communicator. For easy configuration and aligned user experience across portfolio.

Configurable Alarm Level

	High	Low
Rosemount	21.75mA	3.75mA
NAMUR	22.50mA	3.60mA

Configuration software can now switch between Rosemount and NAMUR alarm currents. Also reduces problematics that might occur if you need to change, or if ordered incorrectly.

