

Measurement Systems

Reduce cost, risk, and complexity with one-source, integrated systems and solutions.



GET THE EXPERTISE YOU NEED—IN ONE TRUSTED PARTNER

From metering to proving, blending to transferring, and emissions monitoring to process analytics, our complete solutions and breadth of services provide you with confidence in your measurement. Designed by our measurement experts, our proven solutions incorporate Emerson's best-in-class technology to optimize your performance.



- **Implement a custom engineered or pre-engineered** end-to-end solution that's right for your operation.
- **Get the design expertise and technologies** you need for success—all in one place.
- **From concept to commissioning and beyond**, Emerson's experts can not only design an optimal system, but also manage its manufacturing and provide the end-to-end support needed to keep it profitable.

SOLUTIONS FOR EVERY CHALLENGE

Hydrocarbon Custody Transfer and Fiscal Flow Measurement Systems

Oil and gas measurement systems that assure commercial and regulatory compliance.

Gas and Liquid Analytical Systems

Analytical solutions that accurately quantify and manage your product quality.

Blending and Transfer Systems

Solutions that enable on-spec production with greater flexibility.

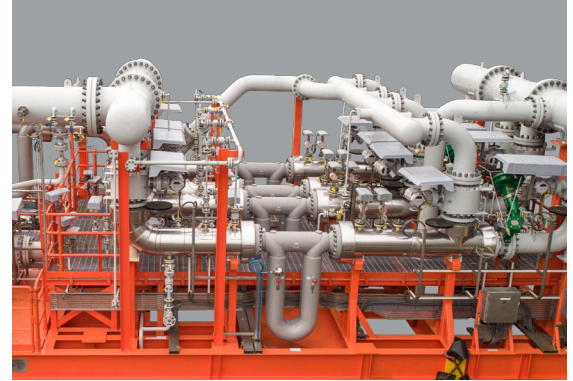
For more information visit [Emerson.com](https://www.emerson.com)
or contact your local Emerson Sales Representative



Hydrocarbon Custody Transfer & Fiscal Flow Measurement Systems

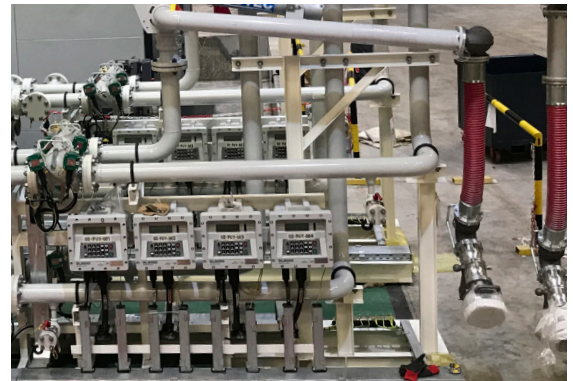
OIL AND GAS METERING AND PROVING SYSTEMS

- **Achieve precise measurement** despite varying operating conditions with dependable and seamless integration of all system components.
- **Minimize financial risk** with reliable turnkey fiscal metering solutions that reduce overall system uncertainty and ensure regulatory compliance.



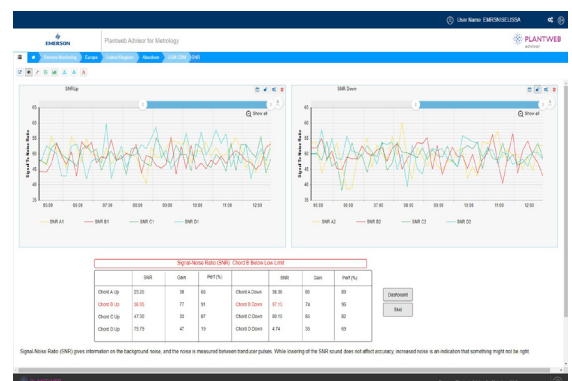
TRUCK AND RAILCAR LOADING SYSTEMS

- **Increase throughput** while accommodating multiple product types and grades using a modular design approach that optimizes terminal bay layout.
- **Ensure accurate batch loading** with automated loading operations and safety interlocks to mitigate overfills and incorrect batching.



PLANTWEB ADVISOR FOR METROLOGY

- **Remotely monitor the health of your metering systems** and integrated instruments anytime and anywhere with the latest IIOT technology.
- **Reduce time on site and ensure measurement confidence** with intuitive dashboards that provide a bird's-eye-view of the health of all of your systems.



Gas and Liquid Analysis Systems

INTEGRATED PROCESS GAS ANALYSIS SYSTEMS

- **Manage product quality with turnkey gas analysis solutions** backed by more than 70 years of analytical expertise.
- **Full portfolio of probes**, fast loop and sample handling systems, auxiliary instrumentation, and more than 100 analyzers and detectors.
- **Reliable custom solutions** to help you better control your process and quantify your product.



CONTINUOUS EMISSIONS MONITORING SYSTEMS (CEMS)

- **Reduce emissions** and optimize energy usage with cost-effective, pre-engineered and custom solutions.
- **Reduce risk of fines** with highly accurate measurement from ppm to percent concentrations.
- **Rugged, compact systems** enable installation closer to the sample probe, reducing cost and complexity.



PROCESS LIQUIDS AND WASTEWATER ANALYSIS SYSTEMS

- **Minimize corrosion and scaling** and maximize plant availability with Steam & Water Analysis Systems (SWAS).
- **Reagent-free Water Quality Systems (WQS)** allows you to reduce the cost of consumables and maintenance.
- **Ensure accurate measurement** of pH, ORP, ozone, chlorine, dissolved oxygen, conductivity, silica, and turbidity.



Blending and Transfer Systems

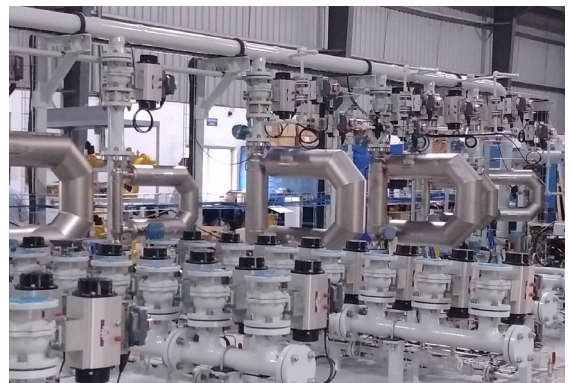
FUEL AND CRUDE BLENDING SYSTEMS

- **Get the process insight** needed to accommodate a wider range of crudes with Emerson's crude blending solutions, technologies and services.
- **Optimize your process** for today's clean-fuels market with online property analysis and advanced in-line blending control systems.



LUBE AND GREASE BLENDING SYSTEMS

- **Achieve blending cost reduction** and quality improvement by relying on Emerson's blending experts to help you reduce cycle times and increase right-first-time blends.
- **Improve operational flexibility** with vertically integrated process control, allowing for better operational management and batch scheduling.



PIGGING AND TRANSFER SYSTEMS

- **Emerson's piggable solutions** enable multiple successive product transfers through a single line without cross-contamination.
- **The robust, modular design** of Emerson's piggable equipment ensures extended operating life and reduces the risk of valve leaks and maintenance.

