

Chocolate manufacturer achieves operation efficiencies with automated packaging solution

RESULTS

- Throughput of more than 110 Cases per minute
- Flexibility to handle 15 filling variants
- Greater ability to scale and adapt to meet future needs



APPLICATION

Packaging of chocolate bars into cardboard trays. Number of bars change depending on the product type resulting in 15 different variations.

CUSTOMER

A renowned confectionery manufacturer based in Germany specializes in producing premium chocolates for global distribution.

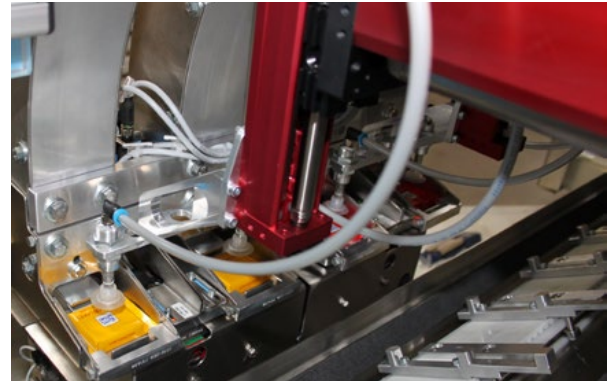
CHALLENGE

The customer needed a machine that would be able to manage multiple packaging variants easily while maintaining a high production rate of 110 trays per minute. The solution needed to be adaptable to meet future needs easily, with the simple integration of technological advancements.

SOLUTION

We provided a customized combined packaging plant. This included a 4 point station to set up cardboard trays and a total of 16 stations for flexible filling. Format changes are handled at the touch of a button. The production throughput requirements were met and the proven in use systems assured the required reliability to ensure Operating Equipment Effectiveness requirements were met.

“Flexible packaging system able to handle 15 variants at the touch of a button”



Flexible solution easily manages product variations.

Learn more:

